

City of Americus Natural Gas Services
Sammy Deason, Natural Gas Director
715 Valley Drive
Americus, GA 31709
Ph # 229-924-6700 / FAX # 229-924-0143

Item for Sale

Propane Air Plant - located on Brady Road, Americus, GA

- **4 tanks for propane**
 - #1 - 29,835 gallon capacity**
 - #2 - 29,835 gallon capacity**
 - #3 - 30,000 gallon capacity**
 - #4 - 30,000 gallon capacity**
- **54,244 gallons of propane in tanks**
- **a blender/mixer**



Minimum bid requested \$ 115,000. The City reserves the right to reject any and or all bids and waive any informalities. NO facsimiles or e-mail bids will be accepted.

After award of bid, facility must be removed completely and with all safety precautions necessary.

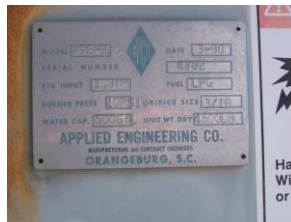
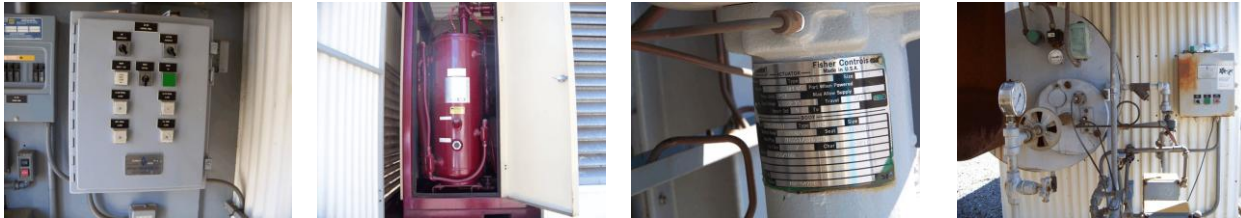
Bids will be accepted until 2:00 pm EST, Thursday, June 11, 2009.

- **Further information and/or appointments for inspection may be obtained by contacting:**

Sammy Deason, Natural Gas Director at 229-924-6700 or sammy.deason@cityofamericus.net

Additional Information:

- **The fence will remain around the property after the equipment and tanks are removed**
- **Proof of Insurance must be provided with bid package.**
- **All debris must be removed from the site**
- **Tank supports may be left on property. If bidder decides to remove it will be at no additional cost to the City of Americus. The ground must be re-leveled with fill and rock.**
- **Payment for equipment and tanks is payable upon award of bid.**
- **Payment for propane is due once propane has been removed from the tanks and actual number of gallons is determined.**
- **Please quote as follows:**
 - **Price for equipment and tanks**
 - **Price per gallon of propane**



Sealed bids are to be mailed to:

**City of Americus
Propane Air Plant
Attn: Kathy Zak
101 Lamar Street
Americus, GA 31709**

NAT'L. BD.

32519

(NATIONAL BOARD SERIAL NUMBER)

RILEY-BEARD INC.

(NAME OF MANUFACTURER)

250 PSIG 100 °F

(MAX. ALLOWABLE WORKING PRESSURE)

10995-01-3

(MANUFACTURER'S SERIAL NUMBER)

7-1974

(YEAR BUILT)

ABOVE GROUND

SHELL	31.25 IN.	O.A.L.	46.9 FT.
HEAD	46.875 IN.	VOL.	29835 GAL.
O.D.	131.875 IN.	WT.	48100 LBS.
D.R.	HEMI IN.	SURFACE	1616 SQ. FT.

TANK SHALL NOT CONTAIN A PRODUCT HAVING A VAPOR PRESSURE IN EXCESS OF 215 PSIG AT 100° F.

STOP FILLING WHEN LIQUID APPEARS
TUBE SET AT 86%

RILEY-BEARD, INC.

SHREVEPORT, LOUISIANA U.S.A.



W
PRT





W
PRT

3 2.5 10

(NATIONAL BOARD SERIAL NUMBER)

RILEY-BEARD, INC.

(NAME OF MANUFACTURER)

250 PSIG 100

(MAX. ALLOWABLE WORKING PRESSURE)

109 951 - 01 - 2

(MANUFACTURER'S SERIAL NUMBER)

6 - 1974

(YEAR BUILT)

ABOVE GROUND

SHELL	.8125 IN.	O.A.L.	46.9 FT.
HEAD	4.6875 IN.	VOL.	29,835 GAL.
O.D.	131.875 IN.	WT.	48,100 LBS.
D.R.	HEMI IN.	SURFACE	1,616 SQ.

TANK SHALL NOT CONTAIN A PRODUCT HAVING A VAPOUR PRESSURE IN EXCESS OF 315 PSIG AT 100°F



STOP FILLING WHEN LIQUID APPEARS
TUBE SET AT 85%

RILEY-BEARD, INC.
SPREVEPORT, LOUISIANA U.S.A.

